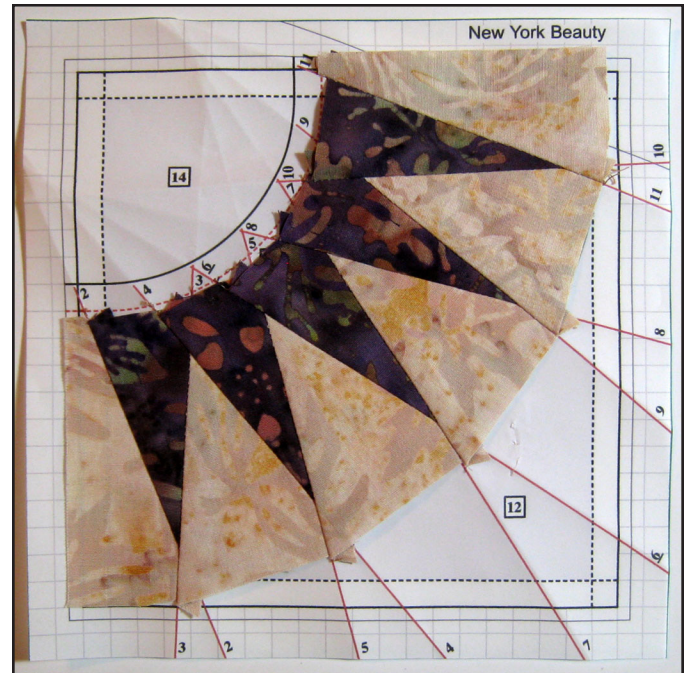
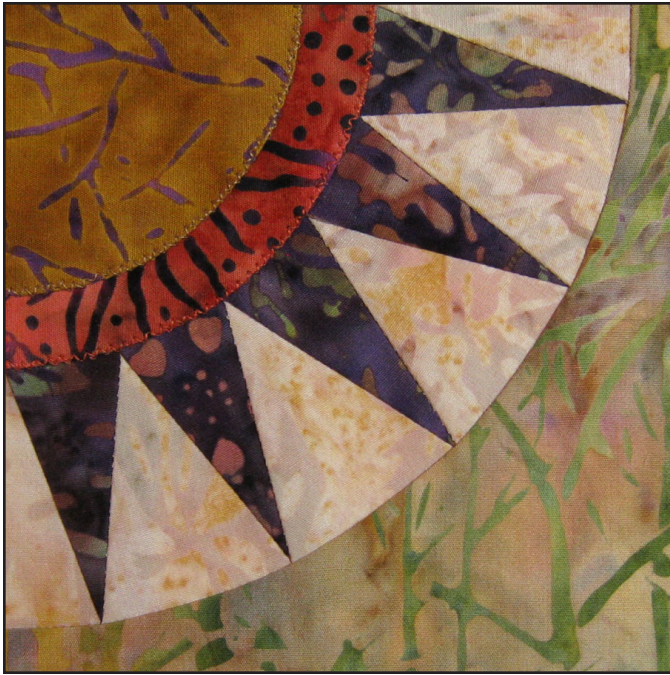


WEEK 30 - NEW YORK BEAUTY

Spikes & Curves



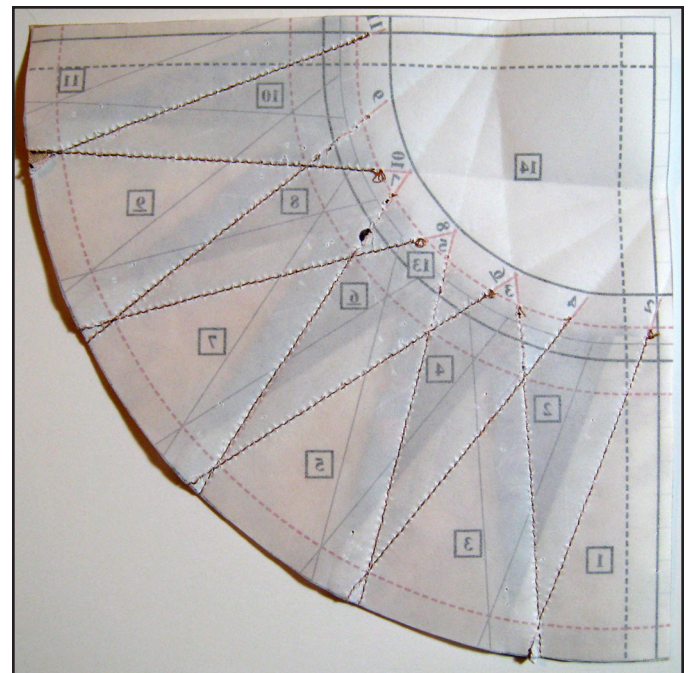
3. Trim away excess fabric and paper on bottom curved edge by cutting on the solid $\frac{1}{4}$ " line. Trim away excess fabric and paper on gray guidelines at sides of block ($\frac{1}{8}$ " from solid black line) leaving a $\frac{3}{8}$ " seam allowance.

CUTTING FABRIC PIECES

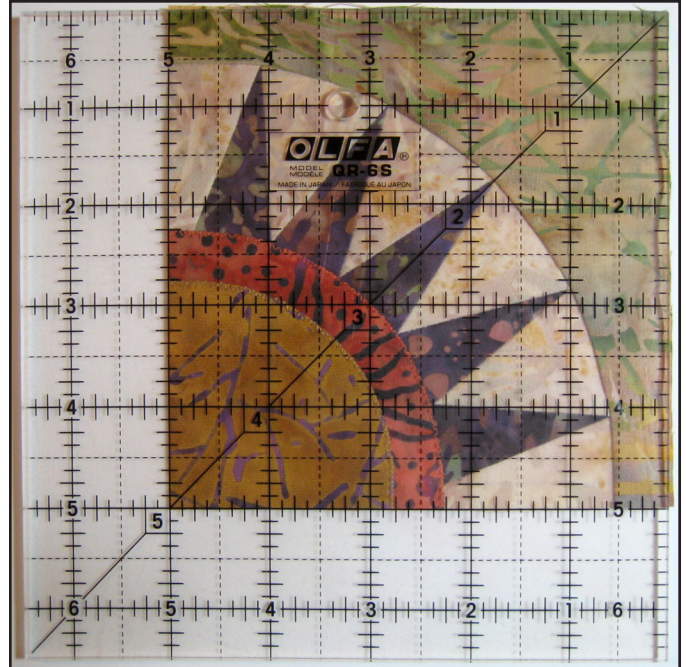
Refer to the Cutting List on Page 3 and the templates on page 4 to cut the fabric pieces.

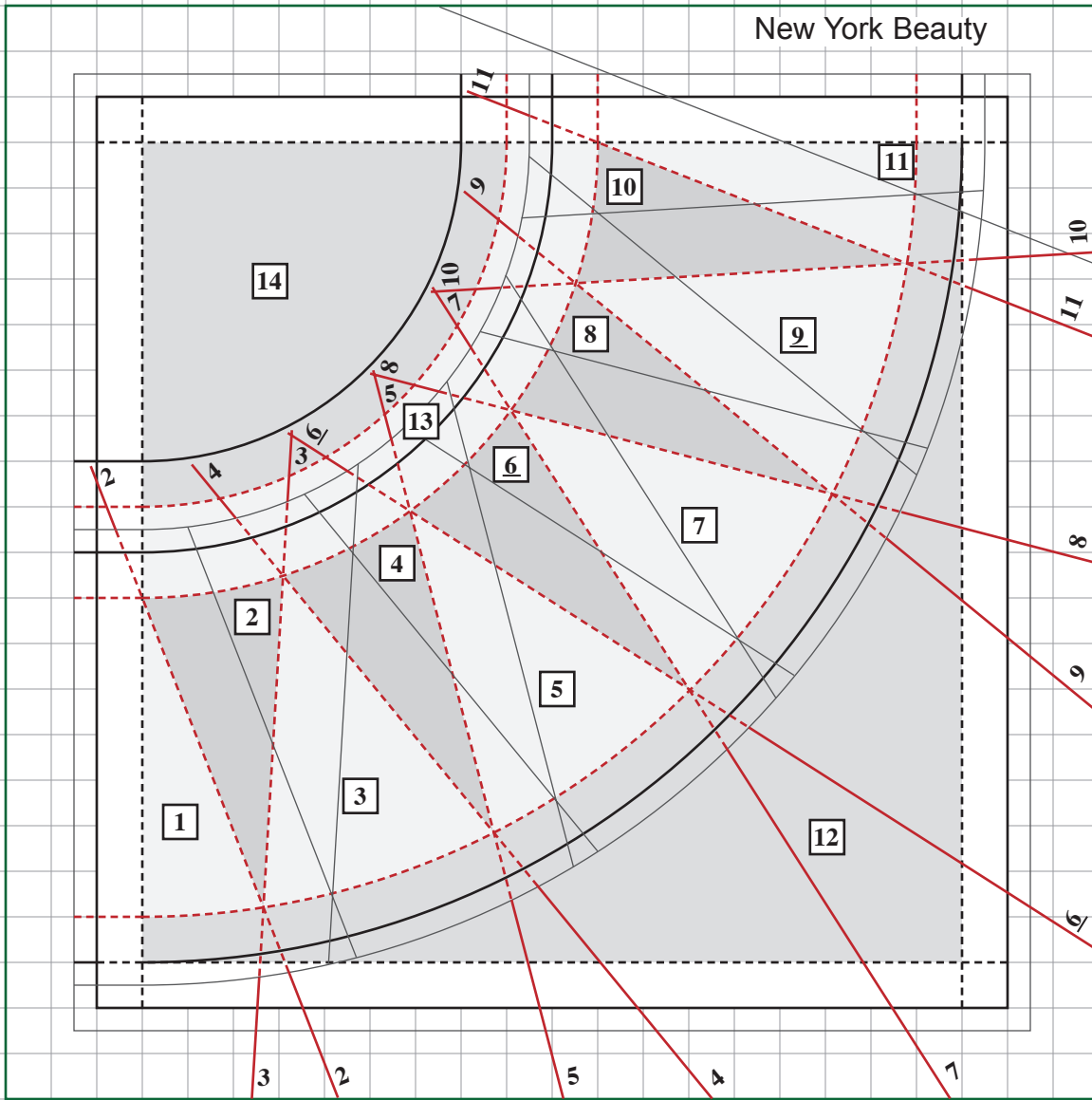
PIECING THE BLOCK

1. Refer to Week 1 General Instructions and Week 16 - Grandmother's Fan to piece the block.
2. The spikes are almost as easy to piece as wedges. They just take longer because there are more pieces.



4. Pin Location #12 fabric around bottom edge matching clips to spike points and straight short edges to sides of block. Make additional clips as needed to ease fabric around curve.
5. Turn over to paper side and sew on the black dashed seam line. Press seam toward Location #12.
6. Prepare fabric for Location #13 and position at inside edge of spikes along red dashed line. Use a few glue dots to hold in place and applique using your favorite method. I used a narrow zig-zag with matching thread.
7. Prepare fabric for Location #14 and position over top curve, lining up straight edges with $\frac{3}{8}$ " guidelines. Applique in place.
8. Square block to 5" by cutting on the solid black line on the top 2 sides, then using a square ruler to trim the bottom 2 sides. Remove paper and trim excess seam allowance from top curves.





1" Test Square

Set Page Scaling = None.
Background Grid Measures 1/4".

NEW YORK BEAUTY

4½" Finished

CUTTING LIST

Location	Size to Cut
1, 11	1⅝" x 2⅝"
2, 4, 6, 8, 10	1¾" x 2⅝"
3, 5, 7, 9	2½" x 2⅝"
12	5¼" x 5¼"
13	3⅜" x 3⅜"
14	2⅝" x 2⅝"

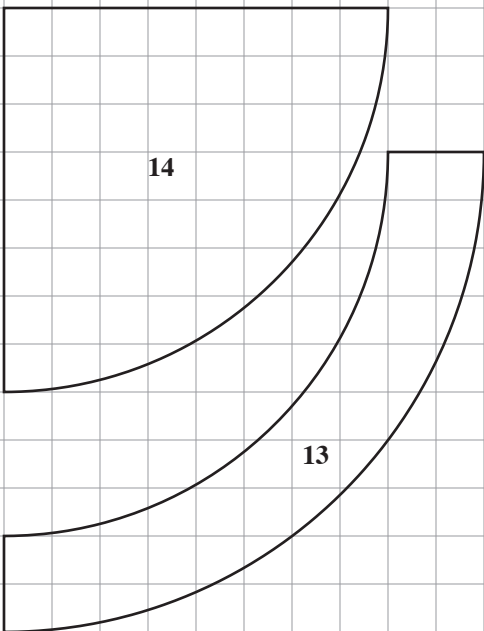
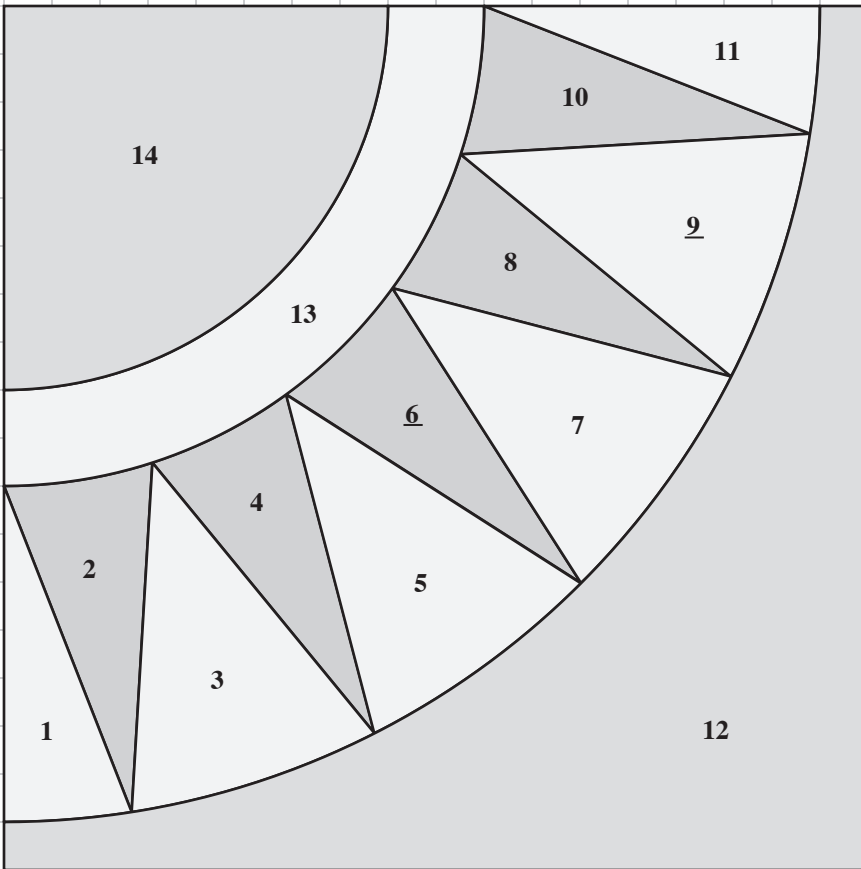
Trace Locations #1, 2, and 3 on freezer paper for templates using the diagram on Page 4. Layer several fabrics together for cutting. For Locations #1 and 11 make mirror images using Template 1.

NEW YORK BEAUTY

4½" Finished

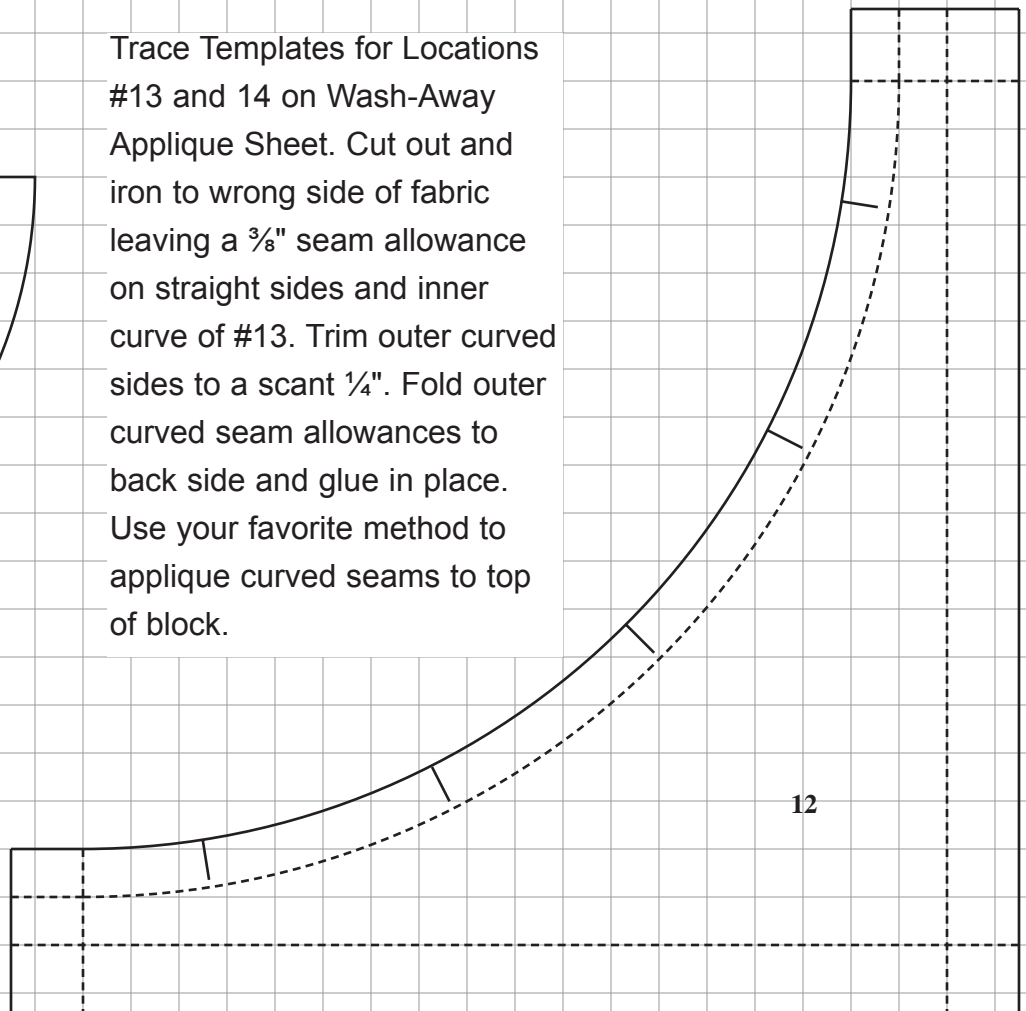
1" Test
Square

Set Page Scaling = None.
Background Grid Measures ¼".



Trace Templates for Locations #13 and 14 on Wash-Away Applique Sheet. Cut out and iron to wrong side of fabric leaving a ⅜" seam allowance on straight sides and inner curve of #13. Trim outer curved sides to a scant ¼". Fold outer curved seam allowances to back side and glue in place. Use your favorite method to applique curved seams to top of block.

Trace Template for Location #12 on freezer paper. Cut out and iron to right side of fabric. Cut 1 or more layers of fabric and clip registration marks around curve.

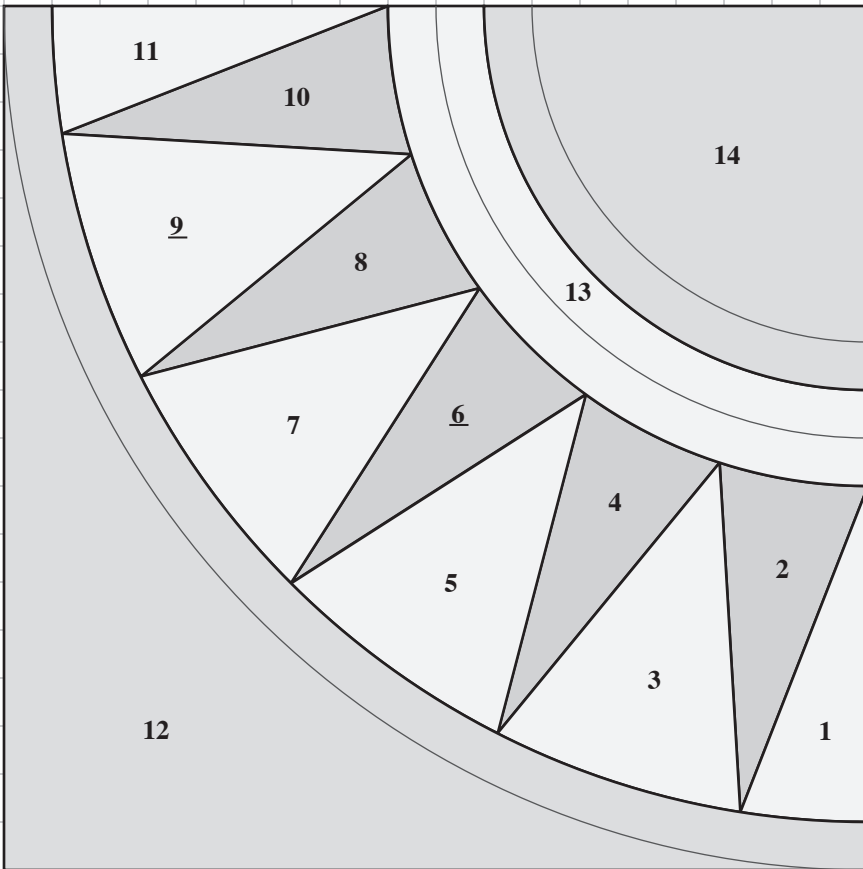
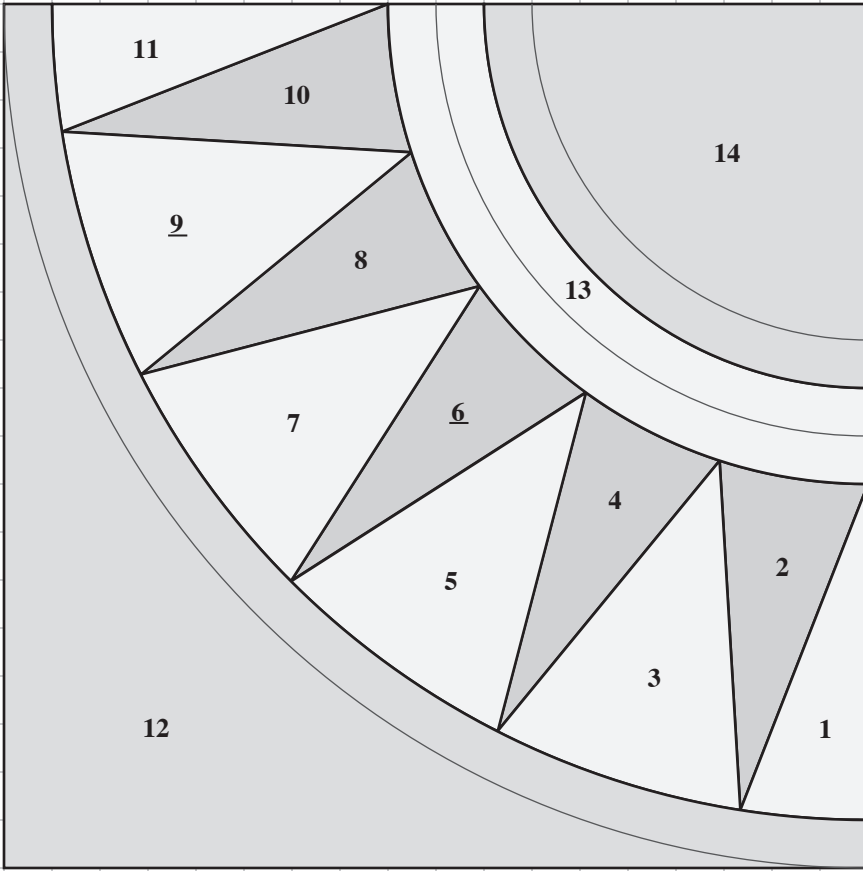


NEW YORK BEAUTY

4½" Finished
Mirrored

1" Test
Square

Set Page Scaling = None.
Background Grid Measures ¼".



Use these mirrored templates for
other paper piecing methods.